



T.C.
MERSİN UNIVERSITY
INSTITUTE OF HEALTH SCIENCES

DEPARTMENT OF MIDWIFERY

GRADUATE PROGRAMS

2025

HISTORY

In our department, where the European Union Midwifery Directives (80/154/EEC-80/155/EEC) are implemented, the Master's Program has been running since 2000.

ACADEMIC STAFF



Prof. Dr. GÖZDE
GÖKÇE İSBİR



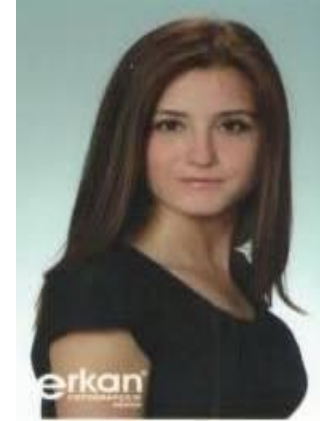
Assoc. Prof. Dr.
MİNE
YURDAKUL



Assoc. Prof. Dr.
MELTEM
AYDIN BEŞEN



Assoc. Prof. Dr.
ÖZLEM ELVAN



Asst. Prof. Dr.
ASLI EKER



Asst. Prof. Dr.
SEVİL GÜNER

FILEDS OF RESEARCH

Research is conducted in the fields of pregnancy, birth, postpartum period, newborn, women's health and reproductive health, midwifery education and professional development, community health and public health, and primary health care.

PROGRAM COMPETENCIES

Midwifery master's program qualifications are the knowledge, skills and competencies determined in line with the Türkiye Higher Education Qualifications Framework, covering both academic and professional development.

- Researches and critically evaluates current information in the field.
 - Knows evidence-based practices in midwifery.
- Understands and interprets scientific research related to the field.
- Conducts independent research using scientific research methods and techniques.
 - Engages in activities that contribute to professional development.
 - Embraces a lifelong learning approach.
 - Develops critical thinking skills.
- Acts in accordance with ethical principles and professional values.
 - Develops leadership skills within midwifery field competencies.
- Plans and implements midwifery services, taking into account national health policies.

EMPLOYMENT OPPORTUNITIES

They are employed in public hospitals affiliated with the Ministry of Health, Family Health Centers (ASM), Provincial Health Directorates, Community Health Centers, KETEM, Gynecology and Pediatrics Hospitals, and in professionally relevant units of private hospitals.

CONTACT

- Unit Address: Mersin University, Çiftlikköy Campus, Faculty of Health Sciences, Ground Floor, 33110 Yenişehir, MERSİN
- Unit Secretariat Phone: +90 0324 3610001 / 68005
- Unit Secretariat Fax: +90 0324 3610571